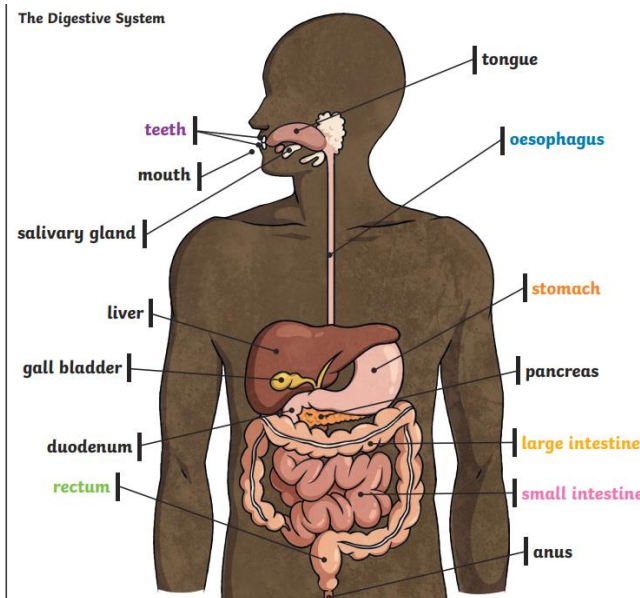


Incredible Insides – Knowledge Organiser

Knows:

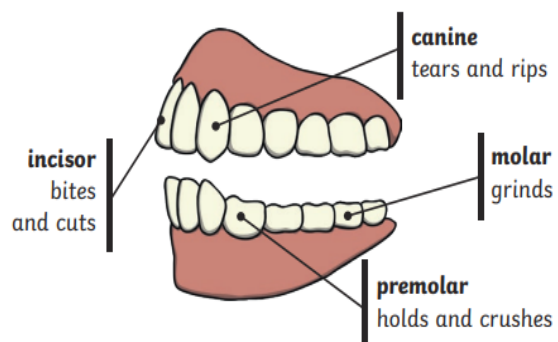
1. Know that adult humans have 32 teeth
2. Identify teeth: incisors, canines, pre-molars and molars, wisdom teeth
3. Know what the different teeth do
4. Be able to label the different parts of the digestive system – mouth, tongue, teeth, oesophagus, stomach, small intestine, large intestine

The Digestive System



Teeth

Human Teeth and Their Functions



Some people have wisdom teeth but they have no function now.

Vocabulary	Definition
Digest	Break down food so it can be used by the body.
Oesophagus	A muscular tube which moves food from the mouth to the stomach.
Stomach	An organ in the digestive system where food is broken down with stomach acid and by being churned around.
Small intestine	Part of the intestine where nutrients are absorbed by the body.
Large intestine	Part of the intestine where water is absorbed from remaining waste food. Faeces are formed in the large intestine.
Teeth	Hard structures in the mouth that help with biting and chewing food.
Incisors	Incisors help you bite off and chew pieces of food.
Canines	Canines are used for tearing and ripping food.
Molars	Molars help you crush and grind food.

